

Key Features

- Operating Frequency: 5.80~6.70 GHz
- $P_{1dB} \geq 36$ dBm
- Power Gain(G_p): ≥ 10.0 dB
- Efficiency (η): $\geq 40\%$
- Port Matching: $Z_{in}/Z_{out} = 50 \Omega$



Product Description

The MCCI5867-P36-1 is a internal matching GaAs device, which adopts advanced co-planar internal matching MCM and thin film circuit technology. The typical working frequency range is 5.80~6.70GHz. This device can be used in different RF/Microwave system and subsystem. The high output power, high efficiency and wide temperature range can make application very flexible.

Absolute Maximum Ratings ($T_c=25^\circ\text{C}$)

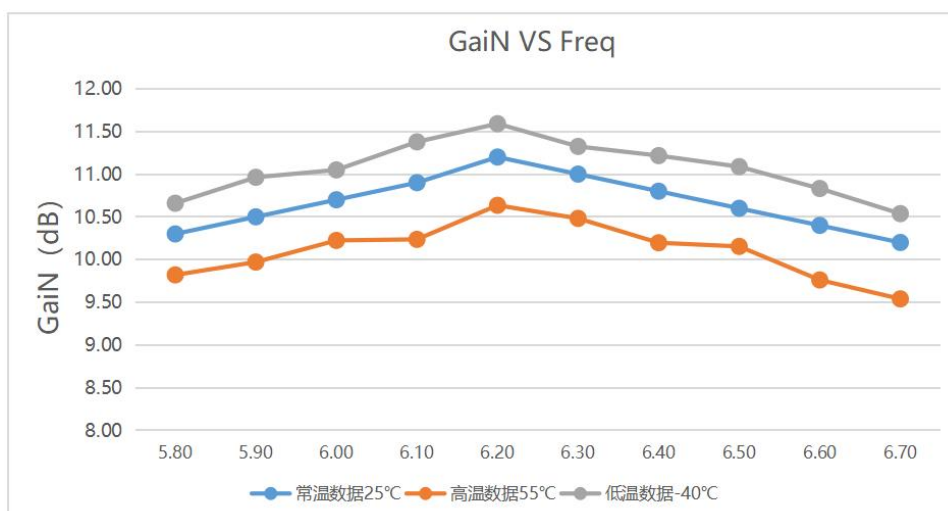
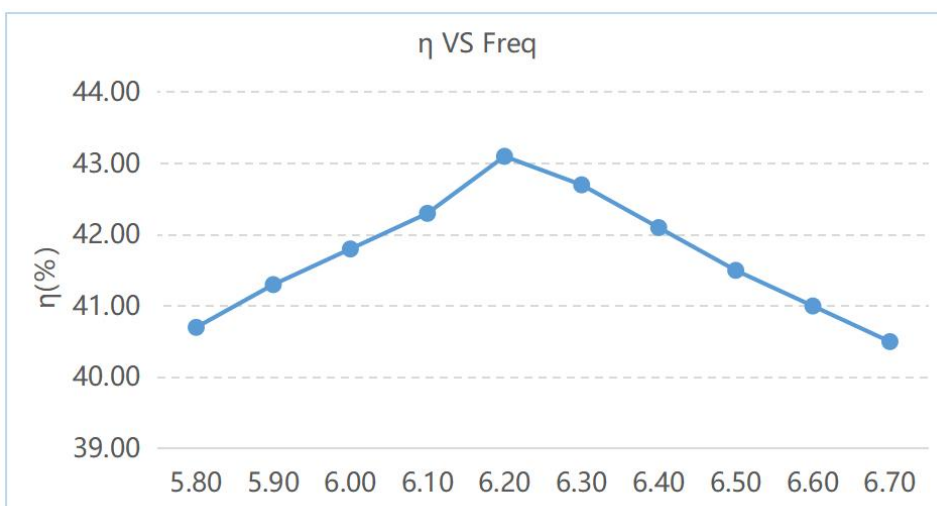
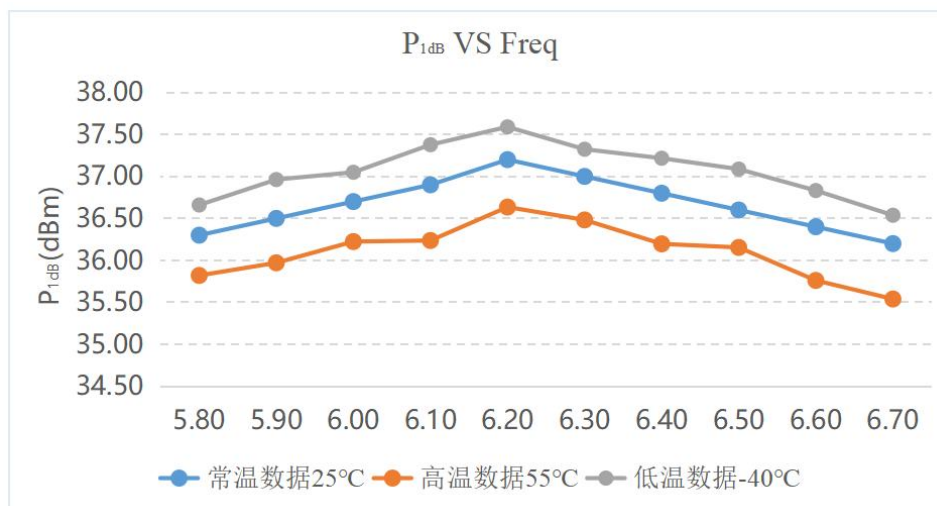
Parameter	Symbol	Value	Unit
Drain-Source Voltage	V_{DS}	11	V
Gate-Source Voltage	V_{GS}	-5	V
Storage Temperature	T_{stg}	-65 to +150	$^\circ\text{C}$
Channel Temperature	T_{ch}	150	$^\circ\text{C}$

***Not recommended to work under these conditions.**

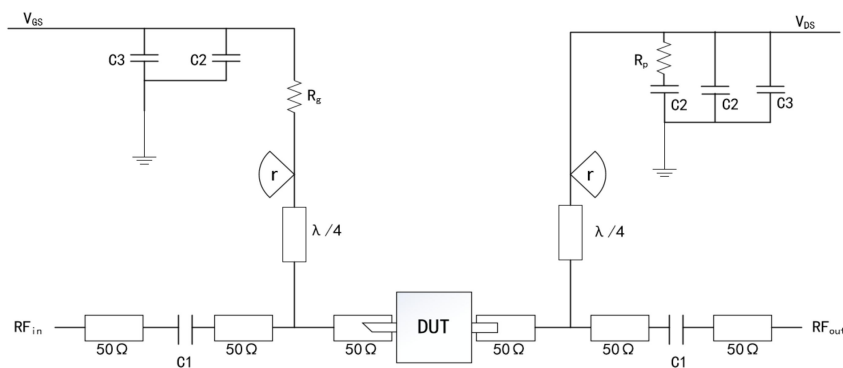
Microwave Electrical Characteristics

Parameter	Symbol	Test Condition	Min	Typ	Max	Unit
Drain Current	I_{dsr}	$V_{DS}: 10V$ CW $P_{in}: 26dBm$ Freq: 5.8~6.7GHz	-	1	-	A
Output Power at 1dB	P_{1dB}		36	-	-	dBm
Power Gain	G_p		10	-	-	dB
Work Efficiency	η		40	-	-	%
Gain Flatness	ΔG		-0.8	-	0.8	dB

Typical Curves



Recommended Application Circuit



DUT: Device Under Test

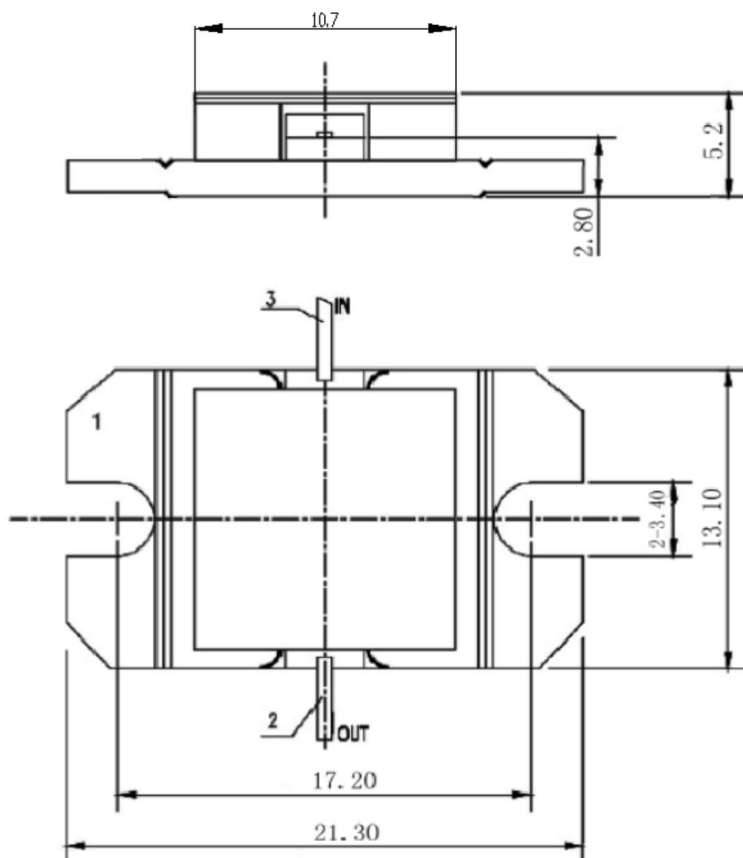
C1:3pF Rp:51Ω
C2:1000pF Rg:15Ω
C3:100uF

Radius ≈ 4.5mm (Rogers 5880, 20 mil)

ESD Level

ESD	Class III	2000V
-----	-----------	-------

Overall Dimensions



Using Notes:

- During transportation and storage, ensure proper drying.
- During the use and assembly of the chip, take precautions against static electricity. Wear a grounded anti-static wristband.
- When powering on, apply gate voltage first, then apply leakage voltage.